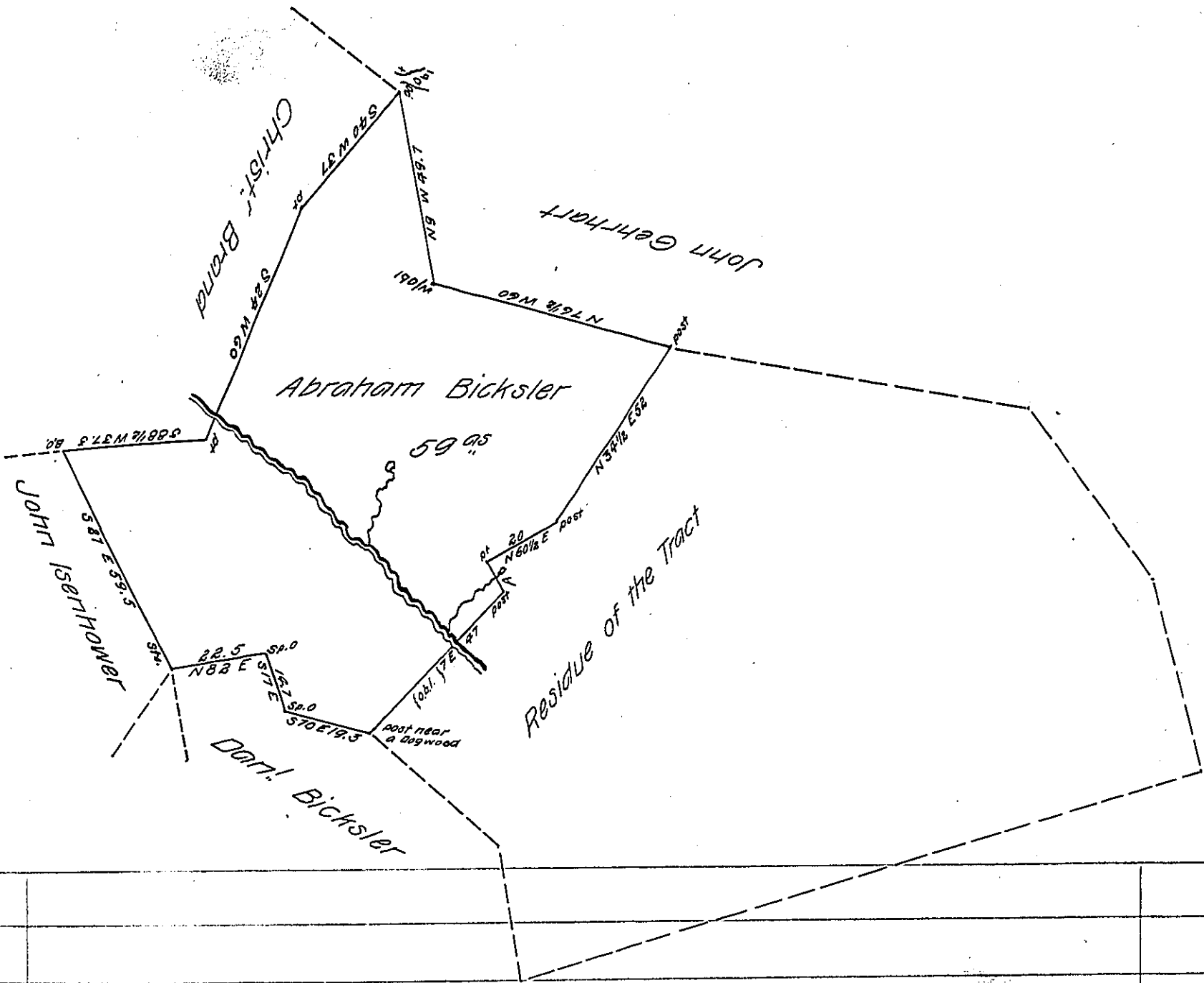


A N 24 W @ 7 to Post



Surveyed the 20th November 1816 for Abraham Bicksler the above described tract of land Part thereof situate in Bethel Township in the County of Lebanon and part in Bethel Township in the County of Berks containing fifty nine acres and allowance of six per cent part of 174^{9/15} 87 on warrant of George Gasnets dated the 1st day of February 1753

To Jacob Spangler Esquire }
 Surveyor General Pa }

Thomas Smith D. S.
 John V. Epler D. S. of Berks County

IN TESTIMONY that the above is a copy of the original remaining on file in the Department of Internal Affairs of Pennsylvania, made conformably to an Act of Assembly approved the 16th day of February, 1833, I have hereunto set my Hand and caused the Seal of said Department to be affixed at Harrisburg, this nineteenth day of May 1905

Loac P. Brown
 Secretary of Internal Affairs.